

PERFORMANCE CATALOG



WE HELP BUILD CHAMPIONS



(402)371-6060 fax: (402)371-8519
1206 S Logan St. Norfolk, NE 68701
www.rothrace.com

Hours: Monday—Thursday 9:00AM To 6:00PM * Friday 10:00AM to 5:00PM * Saturday 10:00AM To 2:00PM

ROTH RACING PERFORMANCE

ORDERING INFORMATION

Our friendly sales staff is available: Monday—Thursday 9:00am—6:00pm
 Friday 10:00am—5:00pm
 Saturday 10:00am—2:00pm to assist you with your order.
 For your convenience our fax is available 24 hours a day, 7 days a week. (402)371-8519

When ordering, please provide us with the part number, quantity, description, size or length, right or left and any other pertinent information. This will reduce errors and speed up the shipping process.

If you are uncertain as to the correct parts you need, it is best to call our tech line at (402)371-6060 and we will be glad to help with any questions you have.

Placing your order: (402)371-6060
 Sending us a fax: (402)371-8519

Tech Information: (402)371-6060
 Internet Address: www.rothrace.com
 E-Mail Address: rothracingperformance@gmail.com

Mailing Address: Roth Racing Performance
 1206 S Logan
 Norfolk, NE 68701



Shipping Information:

Roth Racing Performance can ship most items in our catalog.
 Prepaid UPS or UPS COD. All COD orders will require payment with CASHIERS CHECK or MONEY ORDER. A UPS collection fee will be added to all COD orders. Prepaid UPS shipments can be paid for with credit card (Mastercard, Visa, Discover or American Express). Oversized and / or overweight packages will be charged in accordance with the rates published by UPS.

Prices:

Every effort possible will be made to hold the prices published, however all prices are subject to change without prior notice.

Returns:

We will not accept returns after 30 days of purchase date. No returns accepted without a copy of the original invoice. All returned parts must be unused and in NEW condition. We will not accept returns on special ordered parts. Ship freight prepaid to the mailing address shown above.

DEPOSITS / SPECIAL ORDERS:

We require 50% deposit on all chassis or cage kits ordered, also on any special ordered items. Deposit on chassis or cage kits are non-refundable except in the form of merchandise. NO RETURNS or REFUNDS on special order items.

Claims:

Please check all packages before signing UPS receipt. Claims for any damage or lost in transit orders must be made within 5 days to both UPS and ROTH RACING PERFORMANCE. Warranty claims must be made before parts are installed. These parts are NOT guaranteed by any statement written or orally expressed or implied. Once installed or used, the user assumes all responsibility and liability arising from malfunctions, damage or misuse of the part.

Service Charges: Any check returned for non-sufficient funds will result in a \$25.00 service fee in addition to the amount owed. The account will be turned over for collection if not paid immediately with a CASHIERS CHECK, MONEY ORDER or CREDIT CARD. Mastercard, Visa, Discover or American Express Credit Cards are accepted.

WARRANTY DISCLAIMER:

**THERE IS NO WARRANTY, GUARANTEE OR LIABILITY EITHER EXPRESSED OR IMPLIED, WRITTEN OR ORAL APPLICABLE TO ROTH RACING PERFORMANCE ARE FOR OFF ROAD PURPOSES ONLY—
 NOT FOR STREET USE.**

2. Ordering information / Shipping
3. Index
4. Lazer Chassis
5. Victory Chassis
6. MasterSbilt Chassis
7. Warrior Chassis
8. Afco Shocks
9. Afco Springs
10. Integra Springs
11. Integra Springs
12. Integra Shocks
13. Integra Shocks
14. Control Arms
15. Suspensions Accessories
16. Weight Jacks & Accessories
17. Ball Joints
18. Rod Ends
19. Stock Steering
20. Power Steering
21. Steering Accessories
22. Brakes (1)
23. Brakes (2)
24. Rear Ends—Quick Change
25. Rear Ends—9”
26. Bird Cages, J Bars & More
27. Transmissions & Accessories
28. Engine & Misc.
29. Ignitions
30. Switches and Gages
31. Carburetor Parts
32. Fuels Cells & Fuel Jugs
33. Air Cleaner & Accessories
34. Cooling
35. Fuel Pumps & Accessories
36. Helmets & Accessories
37. Driving Suits & Accessories
38. Pit Accessories (1)
39. Pit Accessories (2)
40. Seats, Scales & Misc.
41. Wheels
42. Body Accessories
43. Bodies
44. Headers



Bernheisel Race Cars opened the doors on a part time basis in 1981 and begun operating full time during 1987. Company founder and president, Jim Bernheisel, saw the need for a quality dirt late model building and repair facility in the northeast United States. Located for over 15 years on Rt.72 in Jonestown, PA, B.R.C. is easily accessible via Exit 90 of Interstate 81. Also nearby are I-78, I-80 and the PA Turnpike. In the past 15 years B.R.C. has positioned itself as one of the premier race car shops in the entire country. Offering a variety of services and products and a friendly, helpful staff gives B.R.C. an edge over all others in the crowded racing industry. Let Bernheisel Race Cars and Roth Racing Performance put you in the winners circle.



STAGE I

Bare Chassis W/All Mounts—Chrome Moly
Options

Sandblast & Powder Coat Chassis

Chrome Drivers Tub Installed

Deck Panels Installed

Aero Cowl Installed

STAGE II

Powder Coated Chassis W/Tub, Deck & Aero Cowl Installed

STAGE III

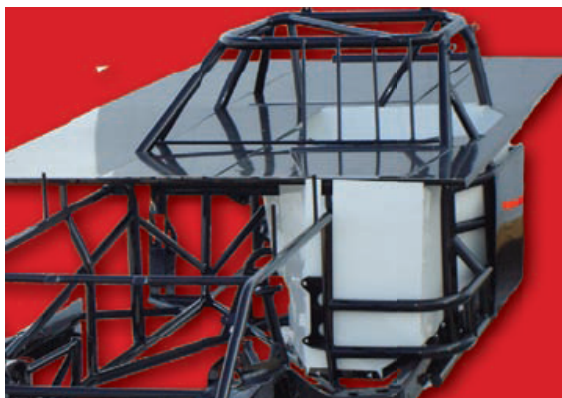
Powder Coated Chassis W/Complete Body and Interior Installed

STAGE IV

Complete Roller

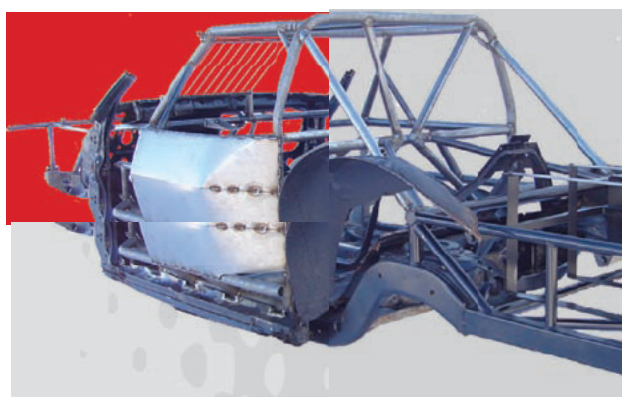
CALL FOR CURRENT PRICING AND FOR ADDITIONAL OPTIONS THAT ARE AVAILABLE!

Victory Chassis



Victory Chassis Modified and Sportmod

TRACK TESTED



Victory Chassis Street and Hobby Stock

CHAMPIONSHIP PROVEN

COMPLETE YOUR VICTORY CHASSIS EXACTLY THE WAY YOU WANT!

The Victory fabrication team prides itself on producing quality race cars that are safe, and give you the kind of results every race team is looking for. The development of the 2012 Victory Chassis line was done so with extensive R&D by quality drivers, on track conditions and configurations all across the country. The result of this extensive process is a race car constructed with tremendous quality, and outstanding results. Let Victory Chassis and Roth Racing Performance put you in the winners circle!

Order your Victory Chassis in any stage:

BASIC UNASSEMBLED MODIFIED KIT

ASSEMBLED MODIFIED KIT

BASIC UNASSEMBLED SPORTMOD KIT

ASSEMBLED SPORTMOD KIT

BASIC UNASSEMBLED HOBBY STOCK KIT

ASSEMBLED HOBBY STOCK KIT

BASIC UNASSEMBLED STOCKCAR KIT

ASSEMBLED STOCKCAR KIT

CALL FOR CURRENT PRICING AND ADDITIONAL OPTIONS THAT ARE AVAILABLE



MasterSbilt Race Car Chassis Inc. was founded in 1982, and has grown to become one of the largest manufacturers of dirt track late model race car chassis in the United States. Located directly off of Interstate 65 and US Highway 31 in Southern Indiana, the facility is centrally located and easy to access - just 1/2 mile north from exit 36 of Interstate 65.

MasterSbilt Race Car chassis are constructed from the finest materials with driver safety in mind. Having won most every notable race event, MasterSbilt has the knowledge and latest equipment to put your race team in the winner's circle. Owners, "Tader" and Keith Masters are actively involved in continuing research to provide their drivers with optimum set-up information.

ROTH RACING PERFORMANCE is very proud to be an Authorized MasterSbilt dealer and stocks all necessary MasterSbilt components to keep the Weekend Warriors supplied to get them to victory lane.

We have a very good working relationship with the technical department at MasterSbilt to be able to keep all MasterSbilt Racers at the top of all technical developments.

Call for current pricing for the all new GEN X Chassis

TIPS

- Always start with standard set-ups that are recommended by your chassis builder.
 - Never over adjust your suspension
 - Be sure to factor in your tires when making any and all adjustments
- Too tight is never the right choice, too much traction will cause your car to under steer.
 - Keep accurate and detailed records of changes made.
- Know what set-up is right for track conditions. Tighter is better for stop and go, loose is better for long momentum tracks.



WARRIOR RACE CARS.....designed and built by Goddard Performance Parts have without question evolved into the most Versatile and adjustable dirt late model chassis available today. The design has proven itself worthy of the top drivers from across the United States. Sanford Goddard and the entire staff at Goddard Performance Parts and Roth Racing Performance ask for the opportunity to show how Goddard Performance Parts and Warrior Race Chassis can put you in the winners circle!



Call For Current Pricing and Options

Call Tony at (402)371-6060

SHOCKS



AFCO's T2 Twin—Tube Adjustable shocks provide consistent, fade—free performance and allow the key functions of the shock to work at their maximum effectiveness. The low speed sensitivity to valve changes are substantially enhanced



7" & 9"

Double Adjustable \$439.01

Standard \$178.98



Coil Over Kits Starting at \$38.99



STREET STOCK	
SS-100	\$49.95
SS-200	\$49.95
SS-201	\$49.95
SS-400	\$49.95
WELDED BEARING	
7"	\$59.95
9"	\$59.95

Rod Ends	
Standard K105	\$30.00
Dbl Adj. Hiem End	\$37.99
Take Up Spring	\$37.99
Nylon Slider	\$17.50

SPRINGS

Page 9



Why You Should Choose AFCO SPRINGS:

- QUALITY CHECKED, INSPECTED AND TAGGED WITH RATE.
- WIDE SELECTION OF RATES AND SIZES AVAILABLE.
- CONSISTANT—WILL NOT LOSE HEIGHT.
- CHROME SILICONE WIRE IS USED IN EVERY SPRING BECAUSE OF ITS HIGHER TENSILE STRENGTH, AND-LONGER LIFE.
- COLD WOUND AND HEAT TREATED TWICE DURING THE MANUFACTURING PRACTICE
- DOUBLE GROUND ENDS FOR EVEN BETTER CONSISTENCY AND STRAIGHTNESS.
- PROTECTIVE COATED INSTEAD OF PLATED TO AVOID HYDROGEN EMBRITTLEMENT WHICH CAN SHORTEN SPRING LIFE.



SS & Mod Rear 5" X 11"

125#	\$59.99
150#	\$59.99
175#	\$59.99
200#	\$59.99
225#	\$59.99
250#	\$59.99
275#	\$59.99
300#	\$59.99
325#	\$59.99
350#	\$59.99
375#	\$59.99
400#	\$59.99

SS & Mod Rear 5" X 11"

425#	\$71.99
450#	\$71.99
475#	\$71.99
500#	\$71.99

SS & Mod Rear 5" X 13"

125#	\$59.99
150#	\$59.99
175#	\$59.99
200#	\$59.99
225#	\$59.99
250#	\$59.99
275#	\$59.99
300#	\$59.99

SS & Mod Front 5 1/2" X 9 1/2"

500#	\$54.99
550#	\$54.99
600#	\$54.99
650#	\$54.99
700#	\$54.99
750#	\$54.99
800#	\$54.99
850#	\$54.99
900#	\$54.99
950#	\$54.99



LATEMODEL 2 5/8" X 10", 12" AND 14" COIL OVER SPRINGS

080 RATE TO 350 RATE \$64.99EA.



**FEWER COILS,
SAME STRENGTH....THAT'S THE
MX ADVANTAGE**

- High tensile lightweight VMX alloy - Rate etched
- Maximum stroke design • Lifetime guarantee

NEW!



2-5/8" X 8" SPRINGS

PART #	RATE
310-2508-400MX	400
310-2508-450MX	450
310-2508-500MX	500
310-2508-550MX	550
310-2508-600MX	600
310-2508-700MX	700

2-5/8" X 10" SPRINGS

PART #	RATE
310-2510-150MX	275
310-2510-175MX	300
310-2510-200MX	325
310-2510-225MX	350
310-2510-275MX	375
310-2510-300MX	400
310-2510-325MX	425
310-2510-400MX	450
310-2510-375MX	475
310-2510-400MX	500
310-2510-425MX	525
310-2510-450MX	550
310-2510-500MX	575
310-2510-600MX	600

2-5/8" X 12" SPRINGS

PART #	RATE
310-2512-150MX	150
310-2512-175MX	175
310-2512-200MX	200
310-2512-225MX	225
310-2512-275MX	275
310-2512-300MX	300
310-2512-325MX	325
310-2512-400MX	400
310-2512-375MX	375
310-2512-400MX	400
310-2512-425MX	425
310-2512-450MX	450
310-2512-500MX	500

2-5/8" X 14" SPRINGS

PART #	RATE
310-2514-100MX	100
310-2514-175MX	175
310-2514-185MX	185
310-2514-200MX	200
310-2514-225MX	225
310-2514-250MX	250
310-2514-275MX	275

With Integra's full line of performance racing shocks and springs, you can count on us to bring just the right combination of suspension control for the demands of your racing conditions.

EXTRA THICK 1-1/4" MX COIL-OVER SPRING RUBBERS

• Extra thick to fit MX Spring applications

Coil-Over Spring Rubber, Soft-Yellow 310-30112-1
Coil-Over Spring Rubber, Medium-Orange 310-30113-1
Coil-Over Spring Rubber, Hard-Red 310-30114-1





DESIGNED AND DEVELOPED FOR THE SHORT TRACK RACER

STANDARD COIL-OVER SPRINGS

• BLACK POWDER COATED • RATE ETCHED • LIFETIME GUARANTEE



10" SPRINGS

PART #	RATE
310-2510-150	150
310-2510-175	175
310-2510-200	200
310-2510-225	225
310-2510-325	325
310-2510-350	350
310-2510-375	375
310-2510-400	400
310-2510-425	425
310-2510-450	450
310-2510-475	475
310-2510-500	500
310-2510-525	525
310-2510-550	550
310-2510-600	600

7" SPRINGS

PART #	RATE
310-2507-350	350

MINI 6TH COIL

1-1/2" X 3'

PART #	RATE
310-1503-400	400
310-1503-600	600



12" SPRINGS

PART #	RATE
310-2512-125	125
310-2512-150	150
310-2512-160	160
310-2512-175	175
310-2512-185	185
310-2512-200	200
310-2512-225	225
310-2512-250	250
310-2512-275	275
310-2512-300	300
310-2512-325	325
310-2512-350	350
310-2512-375	375
310-2512-400	400
310-2512-425	425
310-2512-475	475
310-2512-500	500
310-2512-525	525
310-2512-550	550

TAKE UP SPRING

PART #
310-3006-05



13" SPRINGS

PART #	RATE
310-2513-125	150
310-2513-150	160
310-2513-160	175
310-2513-175	185
310-2513-185	200
310-2513-200	225
310-2513-225	250
310-2513-250	275
310-2513-275	300
310-2513-300	325
310-2513-325	350
310-2513-350	375
310-2513-375	400

MISCELLANEOUS SPRINGS

14" SPRINGS

PART #	RATE
310-2513-125	150
310-2513-150	160
310-2513-160	175
310-2513-175	185
310-2513-185	200
310-2513-200	225
310-2513-225	250

ROTH RACING PERFORMANCE

Page 12



STEEL MONO-TUBE WITH SCHRADER VALVE SHOCK SPECS

SHOCK	VALVING	COMP	EXT	PART #
7' Steel	Specify	13-1/4"	20-1/4"	310-40170S
9" Steel	Specify	15-1/4"	24-1/4"	310-40190S



STEEL MONO-TUBE WITHOUT SCHRADER VALVE SHOCK

SHOCK	VALVING	COMP	EXT	PART #
7' Steel	Specify	13-1/4"	20-1/4"	310-40170SNSV
9" Steel	Specify	15-1/4"	24-1/4"	310-40190SNSV



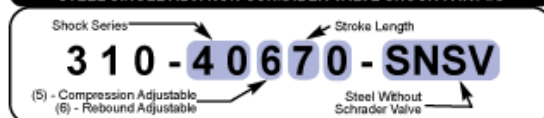
STEEL BASE VALVE WITH SCHRADER VALVE SHOCK SPECS

SHOCK	VALVING	COMP	EXT	PART #
7' Steel	Specify	13-1/4"	19-3/8"	310-40270S
9" Steel	Specify	15-1/4"	23-3/8"	310-40290S

STEEL BASE VALVE NON SCHRADER VALVE SHOCK SPECS

SHOCK	VALVING	COMP	EXT	PART #
7' Steel	Specify	13-1/4"	19-3/8"	310-40270SNSV
9" Steel	Specify	15-1/4"	23-3/8"	310-40290SNSV


STEEL SINGLE ADJ. WITH SCHRADER VALVE SHOCK PART #S

STEEL SINGLE ADJ. NON-SCHRADER VALVE SHOCK PART #S

**STEEL SINGLE ADJUSTABLE
WITH SCHRADER VALVE SHOCK SPECS**

SHOCK	COMP	EXT	PART #
7" COMPRESSION ADJ.	14-1/2"	21-1/4"	310-40570S
7" REBOUND ADJ.	14-1/2"	21-1/4"	310-40670S
9" COMPRESSION ADJ.	16-1/2"	25-1/4"	310-40590S
9" REBOUND ADJ.	16-1/2"	25-1/4"	310-40690S

STEEL TWIN TUBE REBUILDABLE SHOCK PART #S

**STEEL TWIN TUBE
REBUILDABLE SHOCKS**


A rebuildable steel shock with Integra quality! Revolutionary Deflection Disc Valve design makes this shock very consistent throughout the entire velocity range. Can be mounted upside down for reduced unsprung weight. Has a 12mm shaft diameter, and a 1.75" outer diameter body. Custom valving is available with these shocks. Owner serviceable, revalvable, and repairable.



SHOCK	VALVING	COMP	EXT	PART#
7" Steel	Specify	12-1/2"	19-1/2"	310-43140
9" Steel	Specify	14-1/2"	23-1/2"	310-43190

CONTROL ARMS

UPPER CONTROL ARMS

7" - 11 1/2"
JCD1006—LENGTH \$56.95



METRIC
SR19993-15 LEFT OR RIGHT \$53.99



ADJUSTABLE
STARTING AT \$89.99



LOWER CONTROL ARMS

SOLID END
JCD STUD—LENGTH \$57.99



STRUT TYPE
JCD—HOCKEY—LENGTH
\$59.99



BUSHING TYPE
\$62.99



ONE PIECE LOWER
WLC04 RIGHT \$250.00
GP04L LEFT \$250.00



TIP

- While the ideal amount of camber will vary between front suspension layouts, most dirt suspensions need at least 3 degrees positive camber in the left front and at least 3 1/2 to 4 1/2 degrees negative camber in the right front. Camber helps your tires to make side bite. Try adding camber if you need to improve the ability of your race car to turn.
- During roll, the front of the chassis rotates around the front roll center. Consequently, the upper and lower control arm mounts travel in an arc during roll and not in a straight up or down path as they do when you jack the suspension up in the shop or hit a bump on the racetrack.

SUSPENSION ACCESSORIES

Page 15

HOCKEY STICK
5/8 JCD1033 \$12.99
3/4 WL21230001 \$13.99



ALUMINUM TUBES



STEEL SWEDGED TUBES



5/8"

3/4"

4" \$11.50	11" \$13.50
5" \$11.75	12" \$14.00
6" \$12.00	13" \$14.50
7" \$12.25	14" \$15.00
8" \$12.50	15" \$15.50
9" \$12.75	16" \$16.00
10" \$13.00	17" \$16.50

7 1/2" \$12.00	13" \$15.00
8" \$12.50	14" \$15.50
9" \$13.00	15" \$16.00
10" \$13.50	16" \$16.50
11" \$14.00	17" 17.00
12" \$14.50	18" \$17.50

5/8 JCD1075	3/4 JCD1076
8" \$8.50	17" \$13.00
9" \$9.00	18" \$13.50
10" \$9.50	19" \$14.00
11" \$10.00	20" \$14.50
12" \$10.50	21" \$15.00
13" \$11.00	22" \$15.50
14" \$11.50	23" \$16.00
15" \$12.00	24" \$16.50
16" \$12.50	

SOLID HIEM
TC36710820 \$19.95



BALL JOINT COLLAR
MSAFC19060 \$22.09



CLEVIS
5/8 X 3/8" HOLE \$15.25
5/8 X 1/2" HOLE \$15.25



TIP

- When setting toe, it's often not desirable to have the front wheels exactly parallel to each other. Some situations call for toe-out while others call for toe-in, thus the term "toe setting".
- The toe setting will vary with the type of track and the steering linkage. Long tracks may require toe-in at times. Most cars with stock-type steering linkages running the small dirt tracks will need a bit of toe-out to work properly. A toe-out of 1/4 inch to 3/8 inch is about right for most. Too much adds drag, too little will give the car an unstable feeling.
- Toe is best measured some other way than hooking a steel tape in the tire tread on one side and going to the other side. The tire tread is notoriously less than straight on the tire carcass. When two people hold a tape across the tires, it is very difficult to keep the measured points the same distance from the ground. When the measuring points are not the same height on the tire, the distance between them changes causing an error in your measurement.

WEIGHT-JACKS & ACCESSORIES

LOWER SPRING CUP
MSAFC56124 \$14.99



**ALUMINUM HIDDEN SPRING
SPACER**
MSAFC56119 \$38.99



**ADJUSTABLE SPRING
SPACER**
MSAFC56118 \$38.99



SPRING SHIMS
1/8" \$3.00
3/16" \$3.50
1/4" \$4.00



SPRING BUCKET
MSV8M351001 \$34.99



SPRING SPACER
MSAFC56116 \$19.99



WEIGHT JACK PLATE
MSAFC56112 \$11.99



WEIGHT JACK BOLT
6" \$10.50
8" \$10.50
11" 11.50



TIP

- Adjust the cross weight to achieve the proper percentage of weight on the right front and left rear wheels. The easiest way to do this without changing the ride height is to determine the percentage of cross weight that is in the vehicle now. Multiply the percentage by the total vehicle weight. This is the amount of weight on the right front and left rear wheels. Determine the percentage of cross weight desired and multiply it times the total vehicle weight. This is the amount of weight desired on the right front and left rear wheels. Subtract the cross weight desired from the current cross weight (this is the weight difference and could be a negative number), then divide by 8. This number is how much weight on each wheel needs to be changed. Subtract this number from the left front wheel weight and adjust the weight jack accordingly. Add this number to the left rear wheel weight then adjust the weight jack. Subtract this number from the right rear wheel weight and change the weight jack. Finally add this number to the right front wheel weight and adjust the weight jack.

BALL JOINTS

Page 17

UPPER
MOST POPULAR WARRIOR, GRT,
MASTERSBILT AND ROCKET
MSACC 20031 \$19.95



FULL SIZE 71-85 IMPALA
70-81 CAMARO
73-88 CHEVELLE
K10520032 \$17.99



SAME AS MSAFC20032
THIS BALL JOINT RAISES
THE ROLL CENTER
MSAFC20032-1 \$19.99



WARRIOR, AFCO, DIRT-
WORKS AND HOWE
MSAFC20034 \$19.99



HOWE Precision Ball Joints & New Low Friction AFCO Ball Joints Available
PLEASE CALL FOR PRICING

LOWER

67-69 CAMARO
64-72 CHEVELLE
K10520033 \$18.99



MOST POPULAR
SCREW IN TYPE
20036 \$26.99



MOST POPULAR
PRESS IN TYPE
#20038 \$22.95



SAME AS #20038
THIS BALL JOINT
RAISES THE ROLL
CENTER
#20038-1 \$18.99



70-96 CAMARO
73-88 CHEVELLE
77-85 IMPALA
#20039 \$19.99

ROD ENDS

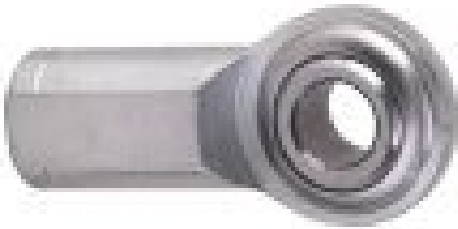
**5/8" MALE RIGHT AND LEFT
\$9.95**



**3/4" MALE RIGHT AND LEFT
\$12.95**



**3/4" FEMALE
\$18.50**



**5/8" SHANK RIGHT
1/2" HOLE
\$14.95**



**OVERSIZED HIEM
FOR STEERING SHAFT
\$19.99**



**JAM NUTS
5/8" RIGHT & LEFT \$1.00
3/4" RIGHT & LEFT \$1.00**



**5/8" ALUMINUM HIEMS
RIGHT AND LEFT
\$18.95
ALUMINUM JAM NUTS
\$0.50**



**REDUCER BUSHINGS
\$1.50**

STOCK STEERING

Page 19

CENTER LINKS



68-72 CHEVELLE
SP9103221175 \$49.99

78-UP METRIC
SP91032211C78 \$38.95



IDLER ARMS

68-72 CHEVELLE SP91032230 \$24.99
78-UP METRIC SP91032210 \$20.99



ADJUSTER SLEEVE \$10.99



TIE RODS



IMCA LEGAL TIE ROD ASSEMBLY
91032800 \$28.99

INNER TIE ROD 71 1/4" LONG MSALL56200 \$12.99



78-UP METRIC INNER
SP9103221 \$17.99



ADAPTER BOLTS
MSALL56284 \$13.99



78-UP OUTER
SP91032216 \$15.99

SPINDLE SAVERS
MSALL42130 \$15.95



POWER STEERING

**SWEET POWER RACK AND PINION
ANY RATIO
CALL FOR CURRENT PRICING**



**PUMP HEAD OR BLOCK
BRACKET KIT
\$34.99**



**KRC V-BELT
ALUMINUM PUMP
MSKRC2000 \$220.00**



**CRANK SPACERS
1/8" \$7.50
1/4" \$10.00**



**TANK \$29.99
BRACKET \$12.99**



**KRC SERPENTINE
ALUMINUM
MSKRC20002 \$235.00**



**KRC V-BELT STEEL
MSKRW000 \$149.00**



#6-STG	\$9.25
#6-45	\$15.99
#6-90	\$20.99
#10-STG	\$13.50
#10-45	\$20.99
#10-90	\$26.00
#6 HOSE	\$5.70 PER FOOT
#10 HOSE	\$9.25 PER FOOT



**KRC PULLEY KIT
\$115.00**

STEERING ACCESSORIES

Page 21

**STEERING WHEEL
QUICK RELEASE HUBS**
JCD1099 \$22.99



**LONACRE 15" OR 17"
STEEL STEERING WHEELS**
\$52.99

AVAILABLE IN BLACK—BLUE—RED



**STEERING SHAFT
LOCK COLLAR**
MSALL52140 \$11.95

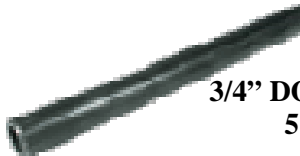


OVERSIZED HIEM
AD10400 \$19.99



**STEERING COUPLER
SPLINES**
30 36 48 STD GM \$15.99

STEERING SHAFT MOUNT
MSALL52124 \$10.50



3/4" DOM STEERING SHAFT
5' LENGTH \$26.99

STEERING QUICKNER
2 TO 1 RATIO
SPHOW91032209 \$145.99



STEERING JOINTS



3/4" BOTH ENDS \$51.99



MSSWE40150612 \$51.99



**METRIC STEERING BOX
FITTINGS**
6-16MM MSALL48210 \$15.00

BRAKES

WILWOOD SUPERLITES
LEFT OR RIGHT
WIL1207431 \$166.99



US Brake
LEFT HAND \$225.99
RIGHT HAND \$225.99



WILWOOD DYNALITES
LEFT OR RIGHT
WIL1206814 \$124.99



DRILLED ROTORS
\$51.95

US BRAKE STOCK METRIC
\$45.99



SCALLOPED ROTORS
MSWIL1608343 \$99.95



SOLID ROTORS
MSWIL1608343 \$99.95



SUPERLITES	HB101M800	\$74.99
DYNALITE	HB100M480	\$54.99
METRIC	HB119M594	60.95
LG GM III	HB103M590	\$57.50



ROTOR HAT
\$39.95

BRAKES



REVERSE HANGING PEDALS
\$199.95



MASTER CYLINDERS
3/4" MSWIL2606764 \$54.99
7/8" MSWIL2606765 \$54.99
1" MSWIL2606766 \$54.99



BRAKE ADJUSTER
\$24.99



**MASTER CYLINDER
REPAIR KIT**
\$21.50



PROPORTIONING VALVE
MSWIL2608420 \$86.99



BRAIDED HOSE

#3-12"	\$9.99	#4-12"	\$9.99
#3-15"	\$10.99	#4-15"	\$10.99
#3-18"	\$12.99	#4-18"	\$12.99
#3-21"	\$13.99	#4-21"	\$13.99
#3-24"	\$14.99	#4-24"	\$14.99
#3-30"	\$15.99	#4-30"	\$15.99
#3-36"	\$18.99	#4-36"	\$18.99
#4-90DEG		#4-42"	\$19.99
#4-18"	\$17.99	#4-48"	\$21.99
#4-24"	\$18.99	#4-60"	\$25.99



LIGHT WEIGHT BRAKE LINE KIT
TC4351896 \$34.99

REAR ENDS

**WINTERS REAR END
STARTING @ \$1,699.99
STANDARD W/ALUMINUM TUBES**



**REAR COVER W/BEARINGS
\$136.09**



**QUICK CHANGE GEARS
\$69.99 / SET**



**QUICK CHANGE STUDS AND NUTS
\$35.99**



**ALUMINUM
LOCK KIT
WA1865A \$13.50**



**DRIVE FLANGE
MSWIL2702290 \$52.95**



**WINTERS ALUMINUM TUBES
\$224.95**



**WIDE 5 HUBS
J70-6513 Rear \$104.99
J70-6735 Front \$117.99**



**GUN DRILLED AXLES
\$129.95**



**BEARING AND SEAL KIT
K10510352 \$33.50**



**Ball Bearing Hubs
Front \$349.99
Rear \$339.99**

REAR ENDS

Page 25

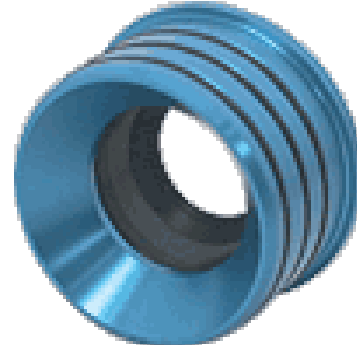
WINTERS 9" FLOATER REAR END
PRICES START AT \$749.00



9" MINI SPOOLS
28 SPLINE TC-15-2801 \$24.95
31 SPLINE TC-515-3101 \$24.95



TUBE SEALS
GOLD \$34.99
RED \$34.99
BLUE \$34.99
SILVER \$34.99



BRAKE BRACKETS
WELD ON \$14.50
BOLT ON \$36.99



YOKES
STANDARD N236081 \$45.00
7" LONG FSLT350107 \$55.00
8" LONG RON699770 \$85.00



DRIVE SHAFTS
ALL LENGTHS AVAILABLE
STARTING AT \$120.00



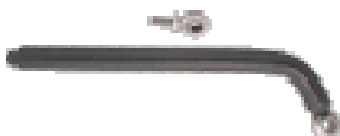
ROTH RACING PERFORMANCE

BIRD CAGES—J-BARS & MORE

**BSB & TWM BIRD CAGES
CALL FOR CURRENT PRICING**



**SOLID J-BARS
BSB 7D41 \$74.00**



**BSB BALL BEARING
GAS PEDAL
BSB3015 \$125.00**



**FRAME SLIDER 2"x2"
BSB3051-20 \$35.00**



**DUMMY SHOCK
BSB4130 \$95.00**



**6TH COIL
\$110.00**



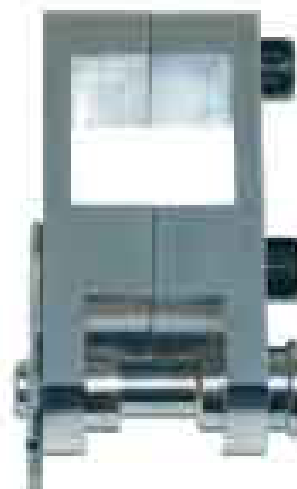
**FRAME SLIDER
2" x 2" ALUMINUM
BSB3027A \$50.00**



**2" X 2" RADIUS
ALUMINUM BSB3056 \$125.00
STEEL BSB7055 \$85.00**



**5TH AND 6TH COIL MOUNTS
BSB4062 \$35.00**



**GAS PEDAL
STANDARD
\$22.00**



**GAS PEDAL
FIREWALL MOUNT
\$25.00**



TRANSMISSIONS AND ACCESSORIES

Page 27

Others Available—Call

FALCON TRANSMISSION
W60100 \$1299.99



FALCON REBUILD KIT
WJN62822 \$97.99

SHIFTER RODS
JCD1063ROD \$20.99ea



SHIFTER W/RODS
DOUBLE HANDLE JCD1063 \$53.99
SINGLE HANDLE JCD1062 \$38.99
(GOLD ONLY ON SINGLE LEVER)

AVAILABLE IN:
MILL,BLACK,BLUE,GOLD,RED,PURPLE



ALUMINUM ARM
JCD1079 \$7.00



TRANNNY REBUILDS
CLUTCH'S, SEALS, BUSHINGS AND LABOR
\$195.00
HARD PARTS EXTRA

BALLSPLINE TAIL SHAFTS
\$25.00 EXTRA



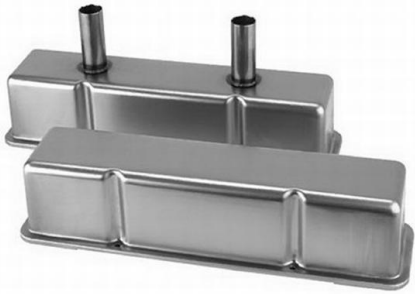
BRINN DRIVE FLANGE
ALUMINUM MSBR173032 \$54.99
STEEL MSBR173031 \$52.99

TCI DRIVE KIT
MCTCI162000 \$179.98



ROTH RACING PERFORMANCE ENGINE AND MISC.

VALVE COVERS
ALUMINUM TC8037156P \$69.95
GOLD \$29.95



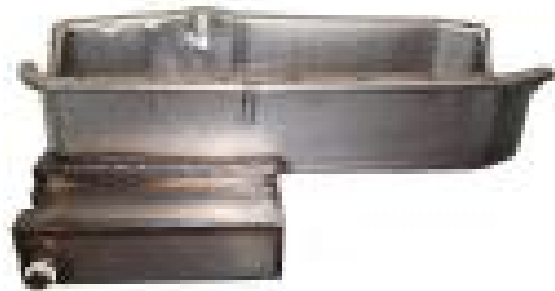
2 HP MINI STARTER
A ST1101 \$139.99



VALVE COVER GASKETS
STOCK NA VS8110 3/16" \$10.00
THICK TC1785 5/16" \$20.00



CLAIMER 7QT PAN
\$65.99



VALLEY TRAY
MS MOR25050 \$29.95



OIL DEFLECTOR
MS MOR67700 \$27.50



STARTER SOLINOID
\$12.00



OFFSET MOTOR MOUNTS
ALUMINUM CP 7189 \$29.95



STANDARD MOTOR MOUNTS
TC5618955 STEEL \$17.95



IGNITIONS

Page 29

CHEVY MSD DISTRIBUTOR
MS MSD85551 \$253.99



RACE HEI DISTRIBUTOR
PC6001D \$129.95



MSD BLASTER 2 COIL
MS MSD8203 \$42.99



ROTOR
MS MSD8467
\$9.95



HEI TOWER CAP
MS MSD8433 \$32.99



ACCEL COIL
\$74.99



MSD 6T BOX
EM6400 \$195.00



CAP-A-DAPT
MS MSD8421 \$43.99



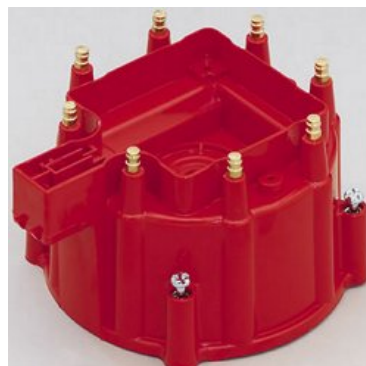
BRONZE GEAR
\$32.95



MSD 6 AL BOX
MS MSD6420 \$304.99



MSD HEI CAP
MS MSD8437 \$23.99



DYNA MODULE
MSD CL35361 \$46.00



MSD RPM CHIP CARDS
MS MSD8743 \$28.99



HIGH OUTPUT HEI COIL
SR PFD121001
\$56.00



ROTH RACING PERFORMANCE SWITCHES AND GAUGES

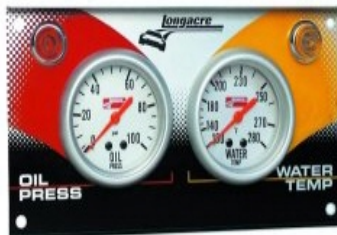
GAUGES

FUEL LON46405 \$45.99
OIL LON46510 \$29.99
WATER LON46515 \$43.99
OIL TEMP LON46520 \$43.99



GAUGE PANELS

2 GAUGE LON44412 \$119.95
3 GAUGE LON44416 \$179.95



SWITCH PANEL
LON44831 \$35.99



BRAKE BIAS GAUGES
MINI LON44136 \$73.90
STANDARD LON44136 \$80.90



CHARGING POSTS
\$15.50 EA



IGNITION SWITCH
\$9.99

STARTER BUTTON
LON4546 \$8.99



MASTER DISCONNECT
LON45761 \$29.95



AUTOMETER TACH
MSATM6809 \$205.95



LONGACRE TACH
LON44385 \$144.95



CARBURETOR PARTS

Page 31

CARB HATS

ALUMINUM TC8981031 \$15.95

PLASTIC MSKLU1031 \$8.50



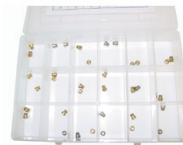
CARB REBUILD KITS

2 BBL \$35.00

4 BBL \$39.95

THROTTLE RODS

18" - 20" - 24"



NEEDLE & SEATS

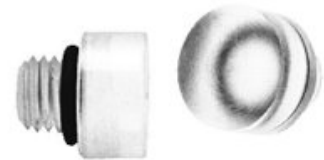
.110 \$25.00 PR

.150 \$40.00 PR



CLEAR SIGHT PLUGS

\$9.50



CARB JETS

ASSORTMENT \$55.00

INDIVIDUAL \$6.25

CARB BUSHINGS

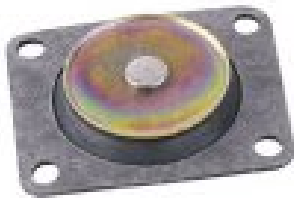
\$5.75



DIAPHRAGMS

30CC MS HLY135-5 \$8.50

50CC MS HLY135-10 \$13.00



POWER VALVES

STANDARD \$10.50

HIGH FLOW \$13.50



CARB FITTINGS

CALL FOR SIZES AND PRICING



FUEL CELLS

FUEL CELLS

8 GALLON 17" X 17" X 8" \$171.99
16 GALLON 24.5" X 18.5" X 11" \$199.99
22 GALLON 33" X 17" X 10" \$209.99
32 GALLON 25" X 17" X 18" \$229.95



FUEL FUNNEL
\$15.99



FUEL CELL FLAPS \$24.99

FUEL JUGS
WHITE
RED
BLUE
PURPLE
\$22.95



FUEL CELL CAPS
\$21.00
NON VENTED \$36.49
GASKET \$8.25

VENT FILTERS
\$18.99



AIR CLEANERS

Page 33

STANDARD HOUSING

COLORS
PURPLE
RED
BLUE
BLACK
MILL
INCLUDES TOP, BOTTOM AND 1/2" SURE
SEAL
\$43.99



OUTERWEAR 14"
\$15.95



OUTERWEAR BREATHER
PRE FILTERS
\$8.00



K&N FILTER OIL
MSKNE990516 \$7.95
FILTER CLEANER
MSKNE990606 \$7.50

OFFSET HOUSING
MILL ONLY \$48.99



AIR CLEANER NUTS
5/16" OR 1/4"
\$13.99



SCRUB BAGS
14" X 6"
\$20.00



VALVE COVER
BREATHERS
W/O SHIELD \$9.95
WITH SHIELD \$11.50



FILTERS
PAPER \$8.50
WASHABLE MSALL 26002 \$39.95



COOLING

FAN BLADES
ALUMINUM 15" AND 17" \$39.95
STEEL 15" AND 17" \$23.95
4 BLADE \$46.99



WATER PUMPS
ALUMINUM \$73.99
STEEL \$39.99
STEWART WARNER \$169.99



FAN SPACERS
1 1/2" UP TO 3"
\$23.99

AFCO RADIATORS
AVAILABLE WITH DOUBLE PASS & OIL
24"X26"X27 1/2" \$198.00
31"X19 1/2" \$198.00



ALUMINUM PULLYS
25% REDUCTION
SHORT PUMP \$74.99
LONG PUMP \$74.99
1 TO 1 \$98.00

PULLEY SHIM KIT
\$7.55



WATER WETTER
\$10.25

WATER RESTRICTORS
KIT
\$7.25



FUEL PUMPS & ACCESSORIES

Page 35

CARTER FUEL PUMPS
170014 #10 IN #8 OUT
\$146.99



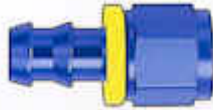
#8 ROLL OVER VALVE
\$25.00



8000 PUSH LOCK FUEL HOSE
#8 HOSE F810008 \$3.99 PER FT.
#10 HOSE F810010 \$4.80 PER FT.



STRAIGHT FITTING
#8 \$9.00
#10 10.95



45 DEGREE FITTING
#8 \$9.00
#10 \$10.95



90 DEGREE FITTING
#8 \$18.65
#10 \$22.00



FUEL FITTINGS
\$9.95



FUEL LOGS
RED BLUE PURPLE
2 BBL \$43.99
4 BBL \$49.95



FILTER ELEMENTS
PAPER \$10.00
STAINLESS \$27.50



FUEL FILTER
\$40.99 W/FILTER

ROTH RACING PERFORMANCE HELMETS AND ACCESSORIES

PYROTECT HELMETS SA2005

BLACK OR WHITE \$299.00

GRAPHIC \$329.00



RacingHelmetGuide.com



RacingHelmetGuide.com

TEAR OFF POST
PLASTIC \$4.99
ALUMINUM \$6.99



HELMET RATCHET
REPAIR KIT
\$10.25

ULTRA-SHIELD TEAR OFFS
\$19.25



RACING OPTICS TEAROFFS
\$26.00

7201C		11 1/2"	straight	Simpson Voyager
7202C		12 3/8"	banana	Bell - all models
7203C		11 1/2"	banana	Simpson SX Shoei
7204C		11 1/2"	nose notch	Simpson RX Super Bandit
7209C		12 3/4"	banana	Simpson Super Shark
7215C		10 3/8"	straight	Brieffe - all models
7216C		11 1/2"	vent cut-outs	Arai

ULTRA-SHIELD TEAR OFF ROLLS
\$4.00 EA.





2-PIECE SUITS

JACKETS

SM-XLG \$54.99

XXLG \$56.99

XXXLG \$56.99

PANTS

SM-XLG \$52.95

XXLG \$53.95

XXXLG \$53.99

BLACK—BLUE—RED

NECK BRACE
360 AND U SHAPE
\$29.99

ULTRA-SHIELD



JUNIOR 2-PIECE SUITS
SM—MED—LARGE

JACKETS \$52.99 PANTS \$48.99



DRIVING SHOES
BLACK—BLUE—RED
\$64.95



GLOVES
SFI 3.3/1
\$38.00



5 POINT SEAT BELTS
BLACK—BLUE—RED
\$79.95

ROTH RACING PERFORMANCE PIT ACCESSORIES

LUG NUT WRENCH
\$40.00



STAGGER STICK
\$45.95



STAGGER TAPE
\$4.00



RIM WRENCH
\$29.99



**BEAD BREAKER
WIDE FOOT**
\$44.95



RINGER GLOVES
\$24.99



MUD PLUGS
MANY COLORS AVAILABLE
\$13.99EA



PIT ACCESSORIES

Page 39

MUD SCRAPER
\$17.95



RACERS TAPE
30' ROLL \$4.50
60' ROLL \$8.50



GEAR CHANGING PAN
ALUMINUM
\$39.99



MUDD OFF
CONCENTRATED MIX 12-1 W/WATER
\$9.95

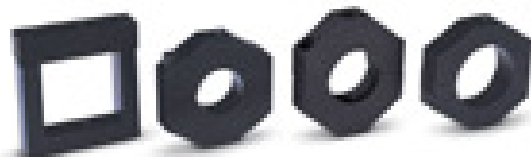


TRACK MATS
RED—BLUE—BLACK
\$18.55

LEAD WEIGHT
\$0.70 PER POUND



WEIGHT CLAMPS
1 1/4" - 1 1/2"



SEATS SCALES AND MISCELLANEOUS

ULTRA SHIELD SEAT
14" THRU 18"
\$159.00



ULTRA SHIELD TOTAL SUPPORT SEATS
CALL FOR OPTIONS
STARTING AT \$508.99



LONGACRE SCALES
CALL FOR PRICES AND OPTIONS



WINDOW NETS
STARTING AT 13.95



DIGITAL TIRE GAUGE
\$34.99



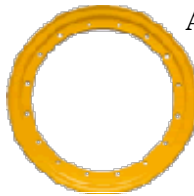
WHEELS AND ACCESSORIES

Page 41



7" BLACK	\$49.95
7" SILVER	\$49.95
8" NON IMCA	\$44.95
8" IMCA BLACK	\$59.95
8" IMCA SILVER	\$59.95
8" IMCA CRHOME	\$87.99
8" IMCA BEADLOCK	\$119.95
8" CHROME BEADLOCK	\$156.95

Other Brands Available
Call for more info.

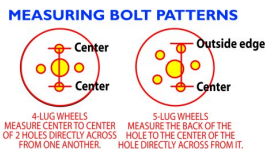


AERO BEADLOCK RING
\$29.95

BEADLOCK KIT
\$48.99



12"X15" NON BEAD LOCK HS	STARTING AT \$179.99
12"X15" NON BEADLOCK XL	STARTING AT \$179.99
14"X15" NON BEADLOCK HS	STARTING AT \$179.99
14"X15" NON BEADLOCK XL	STARTING AT \$179.99
12"X15" BEADLOCK HS	STARTING AT \$259.99
12"X15" BEADLOCK XL	STARTING AT \$259.99
14"X15" BEADLOCK HS	STARTING AT \$259.99
14"X15" BEADLOCK XL	STARTING AT \$259.99



LUGNUTS

ALUMINUM DBL SIDED COARSE \$2.25
ALUMINUM SINGLE COARSE \$1.99
STEEL DBL SIDED COARSE \$1.25
STEEL 7/16", 1/2" OR 5/8" METRIC \$0.90



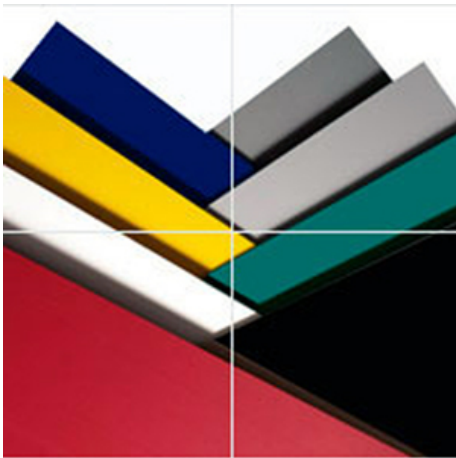
WHEEL STUDS
\$2.25ea.



ROTH RACING PERFORMANCE

BODY ACCESSORIES

COLORED ALUMINUM SHEETS
4' X 10' .040 \$75.00
GOLD AND CHROME \$165.00



COLORED PLASTIC
\$3.49 PER FOOT



COLORED POP RIVETS
MILL SMALL FACE \$10.99 / LARGE FACE \$11.95
COLORED SMALL FACE \$12.95 / LARGE FACE \$13.95



ROLL BAR PADDING
\$4.29 EA



WIRE TIES
100 X 14" \$10.99
ASSORTMENT \$13.99



RIVET GUN
\$44.95



OVAL DZUS
SHORT \$2.00ea.
LONG \$2.50ea



DZUS SPRING
\$0.95ea.



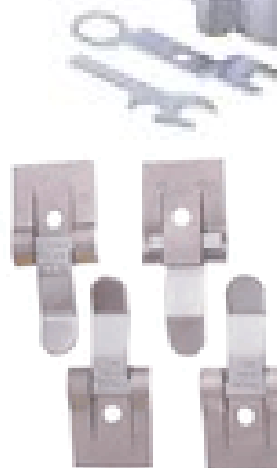
WING DZUS
SELF-EJECT
\$3.99ea.



FLUSH DZUS
SELF -EJECT
\$3.99ea.



PANEL FLIP
CLIPS
4 PACK
\$4.99



BODIES

Page 43



MD3 NOSE KIT
FULL KIT
\$259.00
NOSE ONLY \$135.00

See Us For All Your Body Needs, We Build Custom Bodys and for all Sactioning Body's



Monte Carlo Nose \$117.95



LIGHT KITS
\$30.00



PLASTIC FENDERS
\$19.99EA

ROTH RACING PERFORMANCE LIDS AND CAPS



Roof - \$149.95
 Cap - \$69.95
 Complete - \$219.90

- Made From Fiberglass
- Aerodynamic Design
- Meets Major Sactioning Body Rules
- Includes Carbonfiber Cap - Fiberglass Also Available
- Easy To Mount And Install

Available In: Black, Blue, Red, White, Orange and Yellow
 Call (402)371-6060 or see us on the web at www.rothrace.com

NOSES	\$125.00
DIRT FENDERS	\$99.00
ROOF (FIBERGLASS)	\$219.00
HOOD	\$90.00
FRONT 2 ALUM PIECES	\$40.00
FRONT FENDERS	\$60.00
SPOILER W/KIT	\$75.00
R & L BODY SIDES	\$200.00
PLASTIC KIT	\$40.00
ROOF TRIM KIT	\$50.00
BODY KIT (C&C)	STARTING @ \$899.00
INSTALLED BODY	\$1200.00
1" X 1" ALUM ANGLE	\$1.10 PER FOOT
1" X 1/8" ALUM FLAT	\$1.00 PER FOOT
SPRING STEEL BRACES	\$2.00 PER FOOT
SPRING STEEL PUNCH	\$135.00
BODY BRACE KIT	\$99.99

HEADERS

CALL WITH THE MAKE AND MODEL OF YOUR RACE CAR

DYNATECH HEADERS
STEP 1 5/8" TO 1 3/4"
STARTING AT \$304.99



SCHOENFELD HEADERS
STEP 1 5/8" TO 1 3/4"
LATE MODEL \$255.95
MODIFIED STARTING AT \$166.95



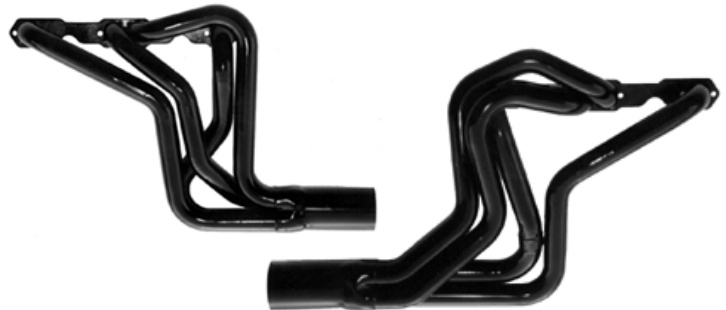
LEFT
SIDE



RIGHT
SIDE



DYNATECH MODIFIED HEADERS
\$234.99



STREET STOCK
STARTING AT \$147.95



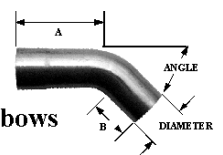
TURN OUTS
\$17.25



3" AND 3 1/2" MUFFLERS
\$17.99



ELBOWS
\$21.99



GASKETS
\$4.50



Exhaust Elbows

This document was created with Win2PDF available at <http://www.win2pdf.com>.
The unregistered version of Win2PDF is for evaluation or non-commercial use only.
This page will not be added after purchasing Win2PDF.